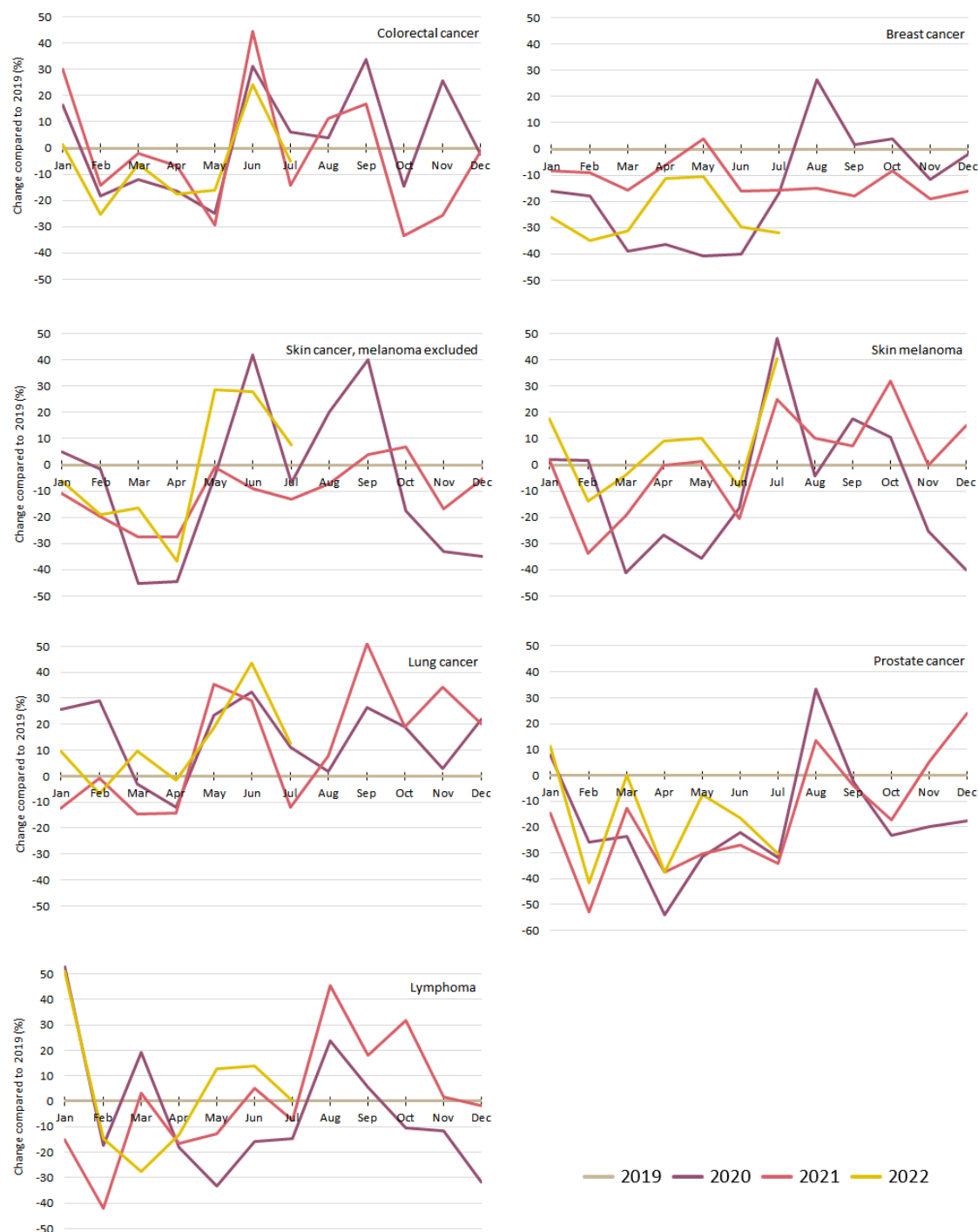


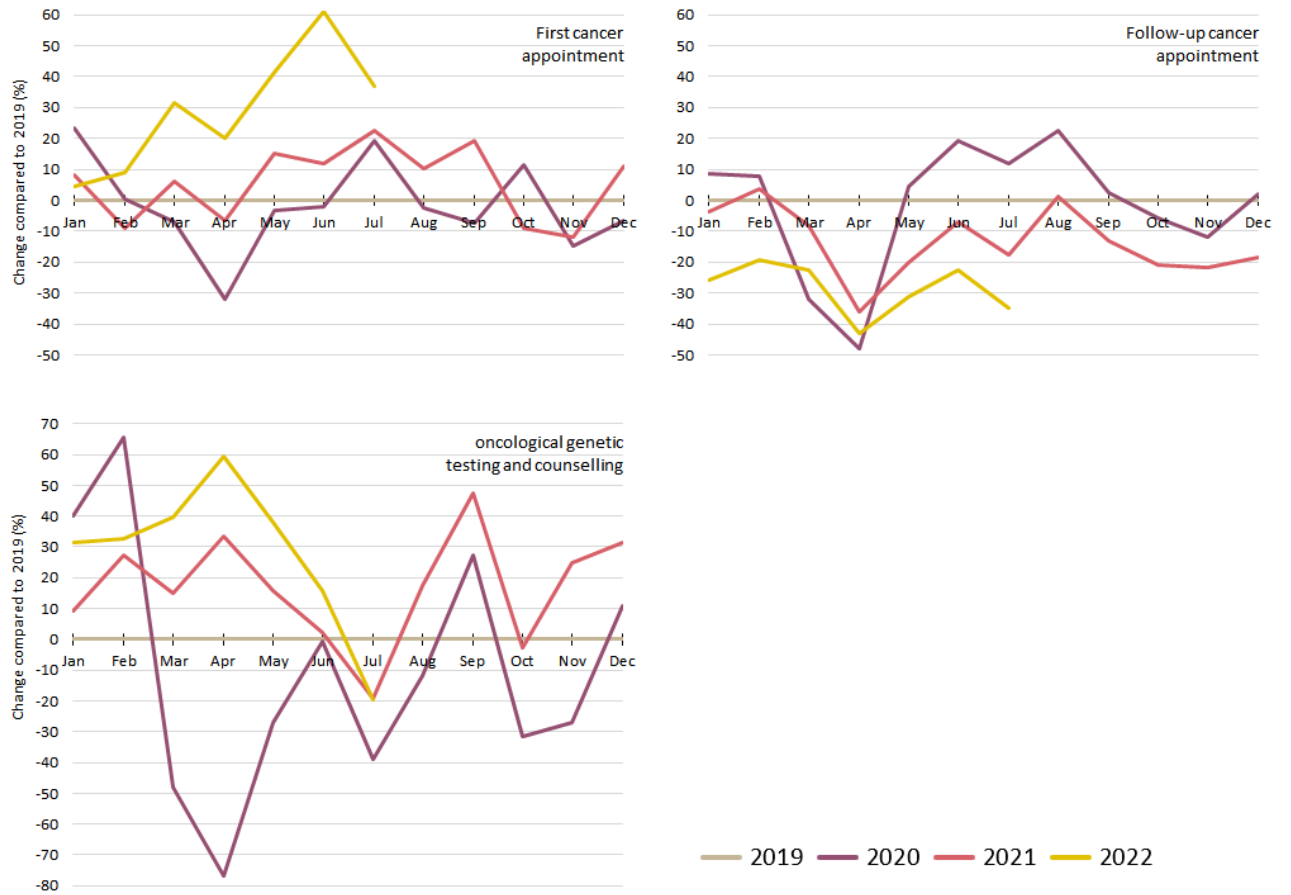
# Impact of the COVID-19 epidemic on cancer burden and cancer care in Slovenia: a follow-up study

Tina Zagar, Sonja Tomsic, Vesna Zadnik, Nika Bric, Mojca Birk, Blaz Vurzer, Ana Mihor, Katarina Lokar, Irena Oblak

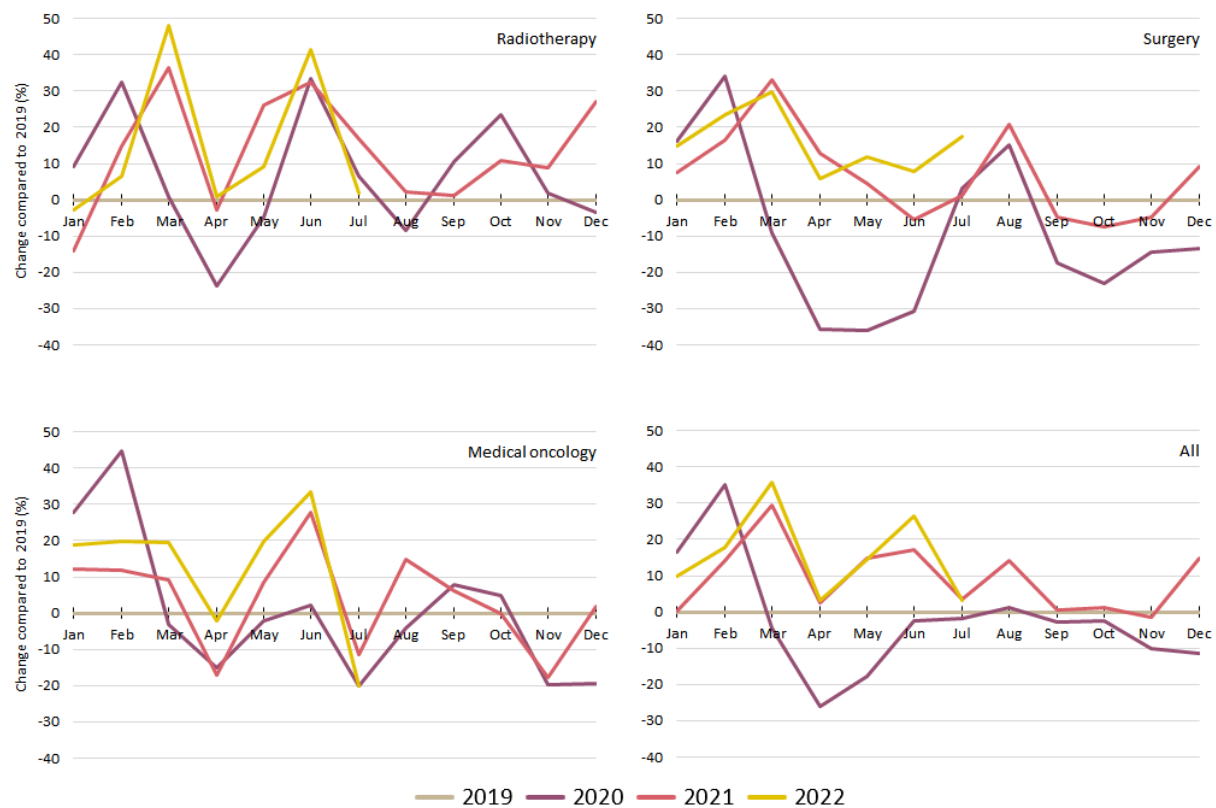
doi: 10.2478/raon-2022-0050



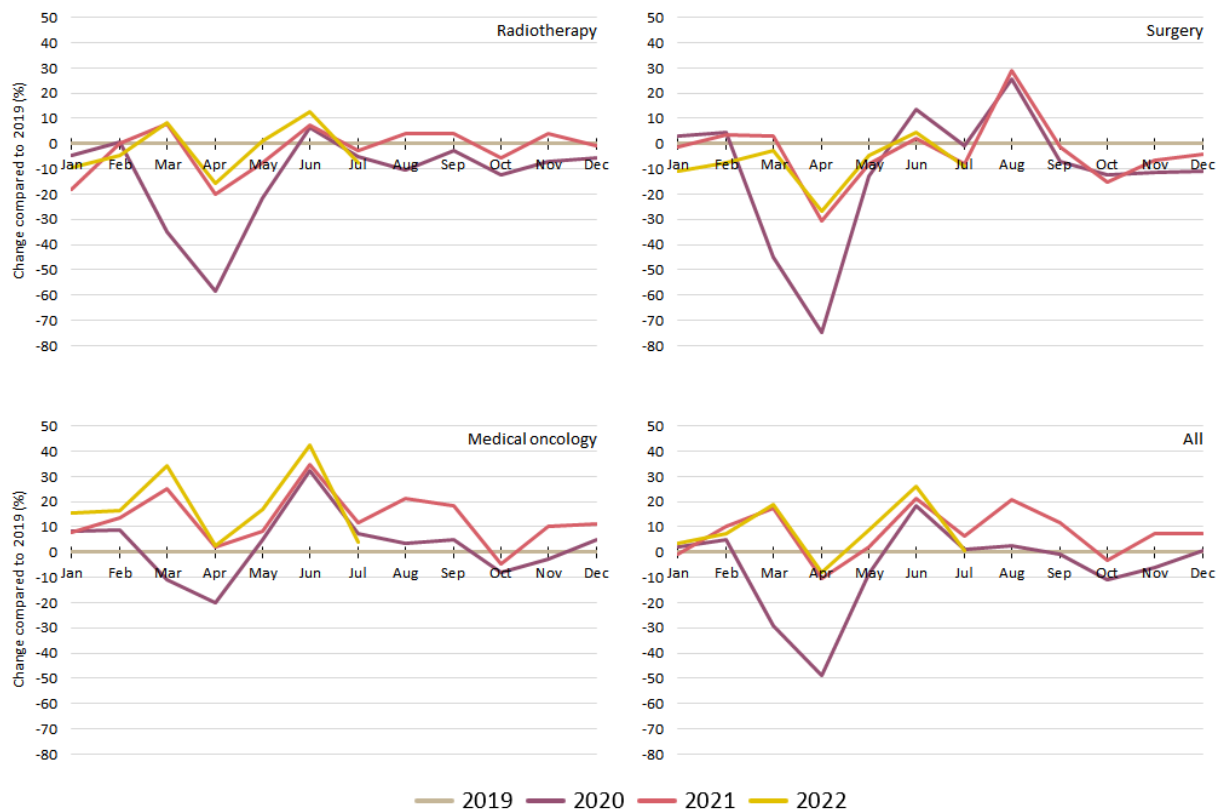
**SUPPLEMENTARY FIGURE 1.** Monthly change (%) in the number of newly diagnosed colorectal, breast, skin with melanoma excluded, skin melanoma, lung, prostate cancer and lymphoma in years 2020, 2021 and up-to July 2022 compared to corresponding months in 2019. Data were collected from the two major cancer centres (Institute of Oncology Ljubljana and University Medical Centre Maribor).



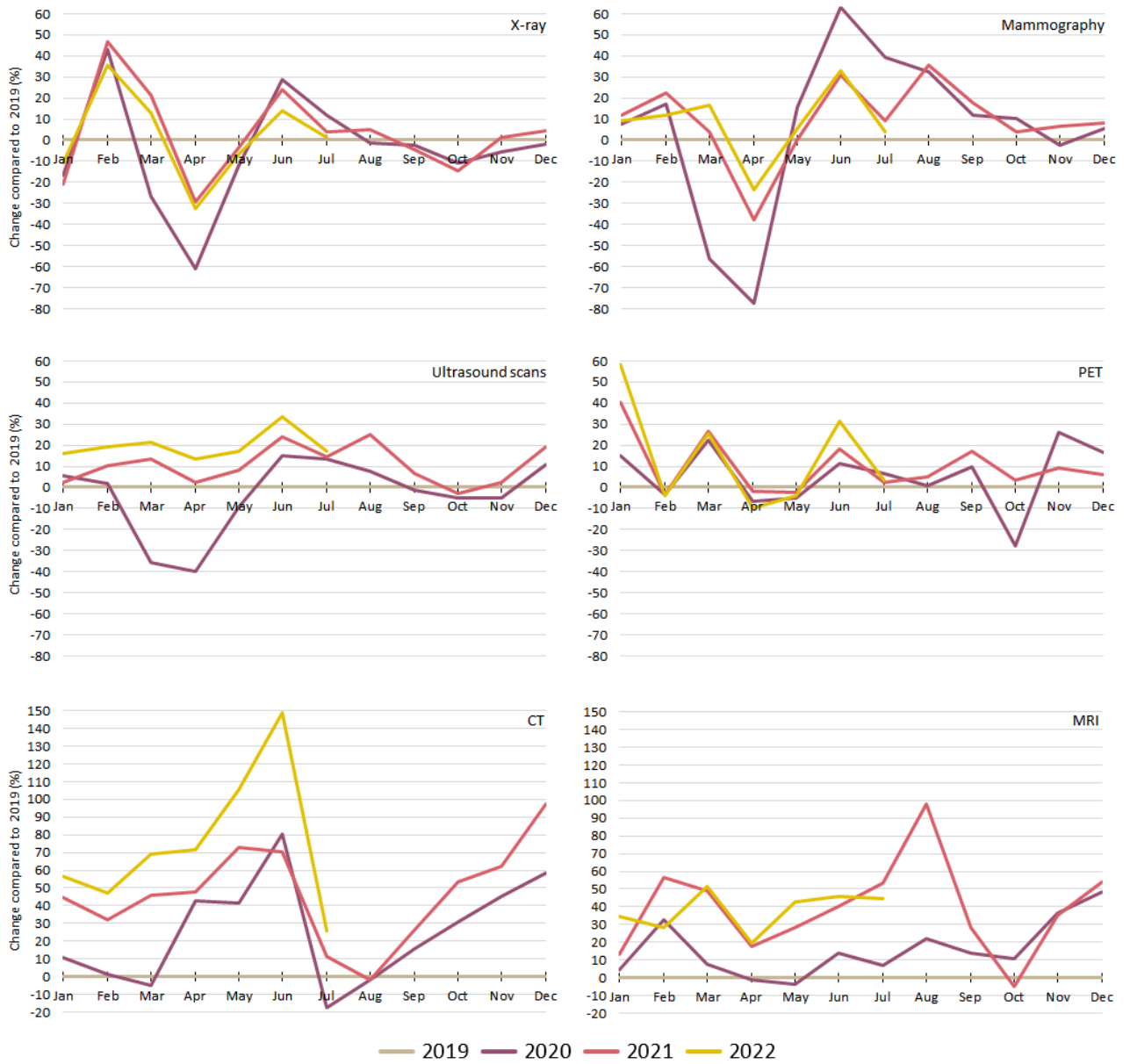
**SUPPLEMENTARY FIGURE 2.** Monthly change (%) in the number of referrals to first cancer appointments, follow-up cancer appointments and oncological genetic testing and counselling in years 2020, 2021 and up-to July 2022 compared to corresponding months in 2019. Source: national e-referral system.



**SUPPLEMENTARY FIGURE 3.** Monthly change (%) in the number of first outpatient appointments at the Institute of Oncology Ljubljana for radiotherapy, surgery, medical oncology and all together in years 2020, 2021 and up-to July 2022 compared to corresponding months in 2019. Source: administrative hospital data of the Institute of Oncology Ljubljana.



**SUPPLEMENTARY FIGURE 4.** Monthly change (%) in the number of follow-up outpatient appointments at the Institute of Oncology Ljubljana for radiotherapy, surgery, medical oncology and all together in years 2020, 2021 and up-to July 2022 compared to corresponding months in 2019. Source: administrative hospital data of the Institute of Oncology Ljubljana.



**SUPPLEMENTARY FIGURE 5.** Monthly change (%) in the number of cancer diagnostic imaging tests at the Institute of Oncology Ljubljana for X-ray, mammography, ultrasound scans, CT, MRI and PET in years 2020, 2021 and up-to July 2022 compared to corresponding months in 2019. Source: administrative hospital data of the Institute of Oncology Ljubljana.