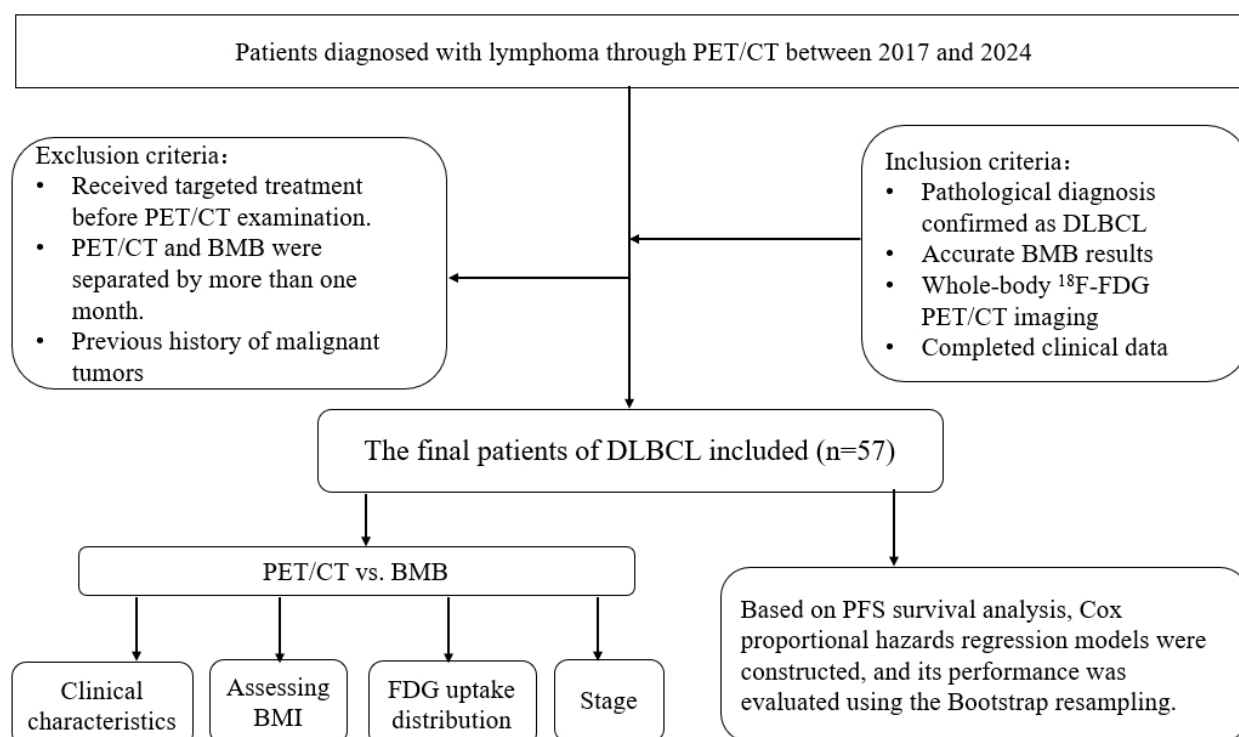


The utility of ^{18}F -FDG PET/CT in assessing bone marrow involvement and prognosis in newly diagnosed diffuse large B-cell lymphoma

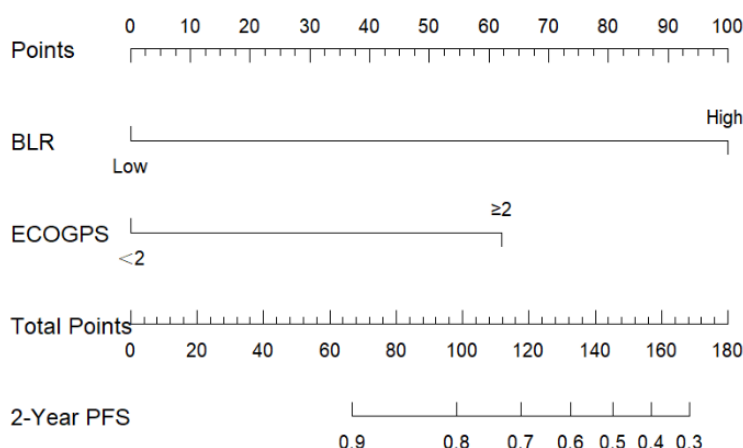
Chunyan Yang, Hong Liu, Furui Duan, Ximei Wang, Ping Li, Dalong Wang

doi: 10.2478/raon-2025-0062



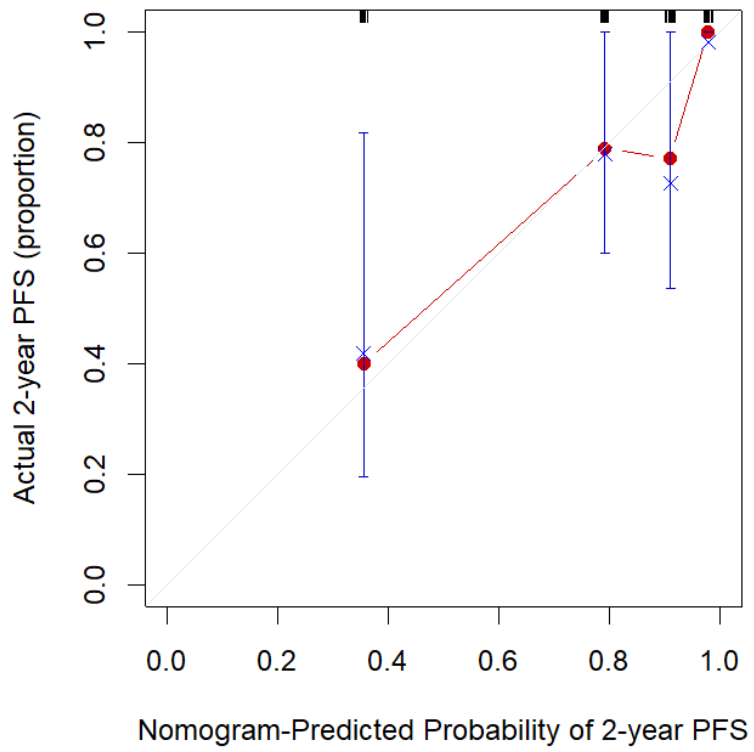
SUPPLEMENTARY FIGURE 1. Study flow diagram.

BMB = bone marrow biopsy; DLBCL = diffuse large B-cell lymphoma; PFS = progression-free survival



SUPPLEMENTARY FIGURE 2. Nomogram for the prediction of progression-free survival (PFS).

BLR = the ratio of the maximum standardized uptake values of bone marrow-to-liver; ECOGPS = Eastern Cooperative Oncology Group physical status score; PFS = progression-free survival



SUPPLEMENTARY FIGURE 3. Calibration curve.

PFS = progression-free survival